

ROAD INDEX

A	J	S	STILLWELL RD. A3
B	K	T	TRAILWOOD RD. F4
B	K	AI-A4	
B	F3		
B	F4-F6		
B	C6-F5		
C	L	U	
C	A2-F2		
C	B1-B6		
	M	V	
	D1-D6		
	A4-F4		
D	N	W	
D	A6-B6		
E	O	X	
E	A6		
F	Y		
F	F4		
G	Z		
G	B5-F5		
G	E1-F2		
G	B2-B6		
H	Q		
H	E5		
H	B3-F3		
H	E2-E4		
I	R		

① HUNTSBURG ELEM. SCHOOL ⑦ HUNTSBURG CEMETERY
 ② AMISH SCHOOL ⑧ UNITED STATES POST OFFICE
 ③ AMISH SCHOOL
 ④ HUNTSBURG BAPTIST CH.
 ⑤ HUNTSBURG CONGREGATIONAL CH.
 ⑥ HUNTSBURG CEMETERY

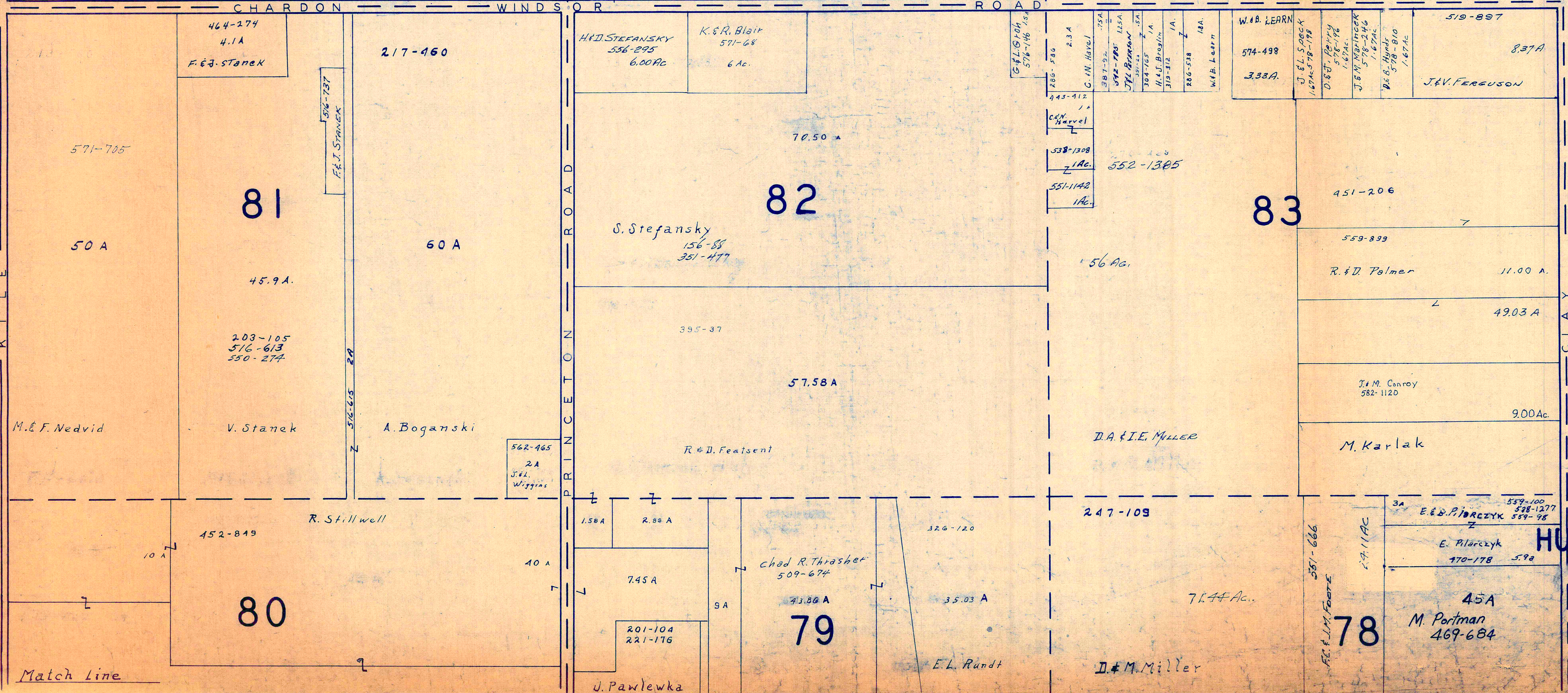
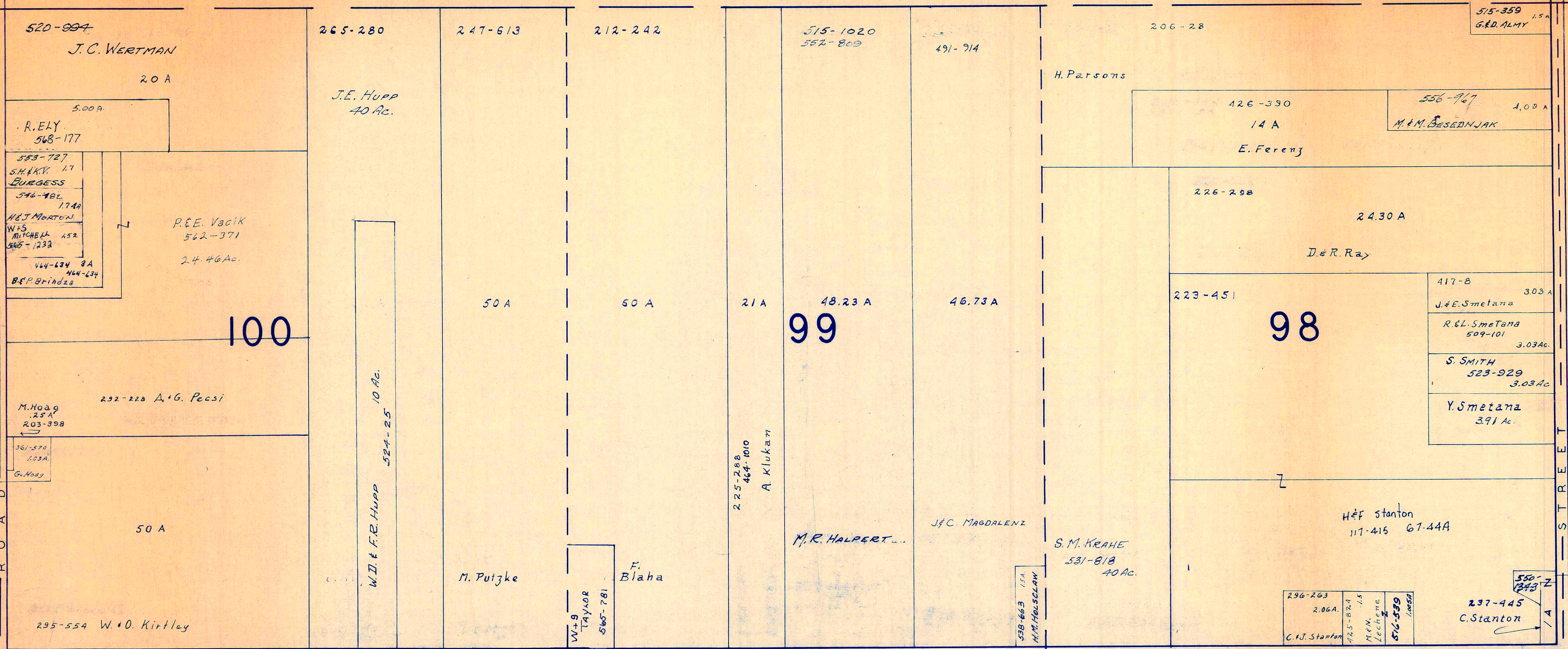
HUNTSBURG TOWNSHIP
 SCALE: 1" = 2000'
 O.J. ROBINSON
 GEALUGA COUNTY ENGINEER

- - - - UNPAVED ROADS
 ——— PAVED ROADS
 - - - - TOWNSHIP LINE
 - - - - COUNTY LINE

MONTVILLE TOWNSHIP

TOWNSHIP

CLARIDON



SCALE 1 300
JAN. 1973

A	B	C	D
E	F	G	H
I	J	K	L
M	N	O	P

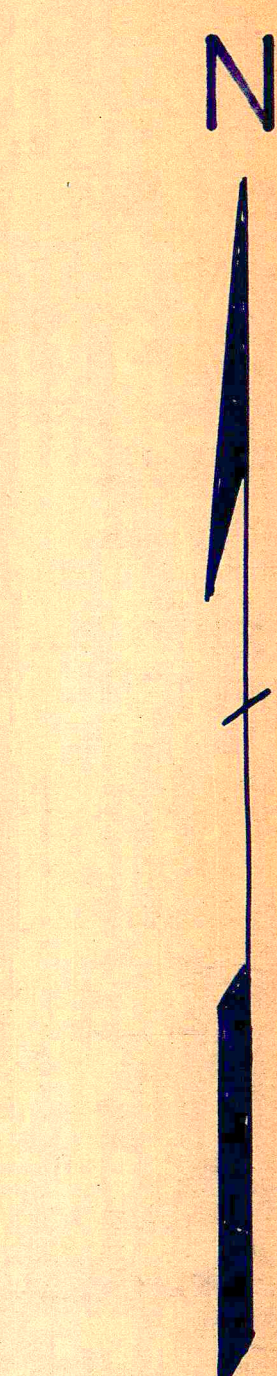
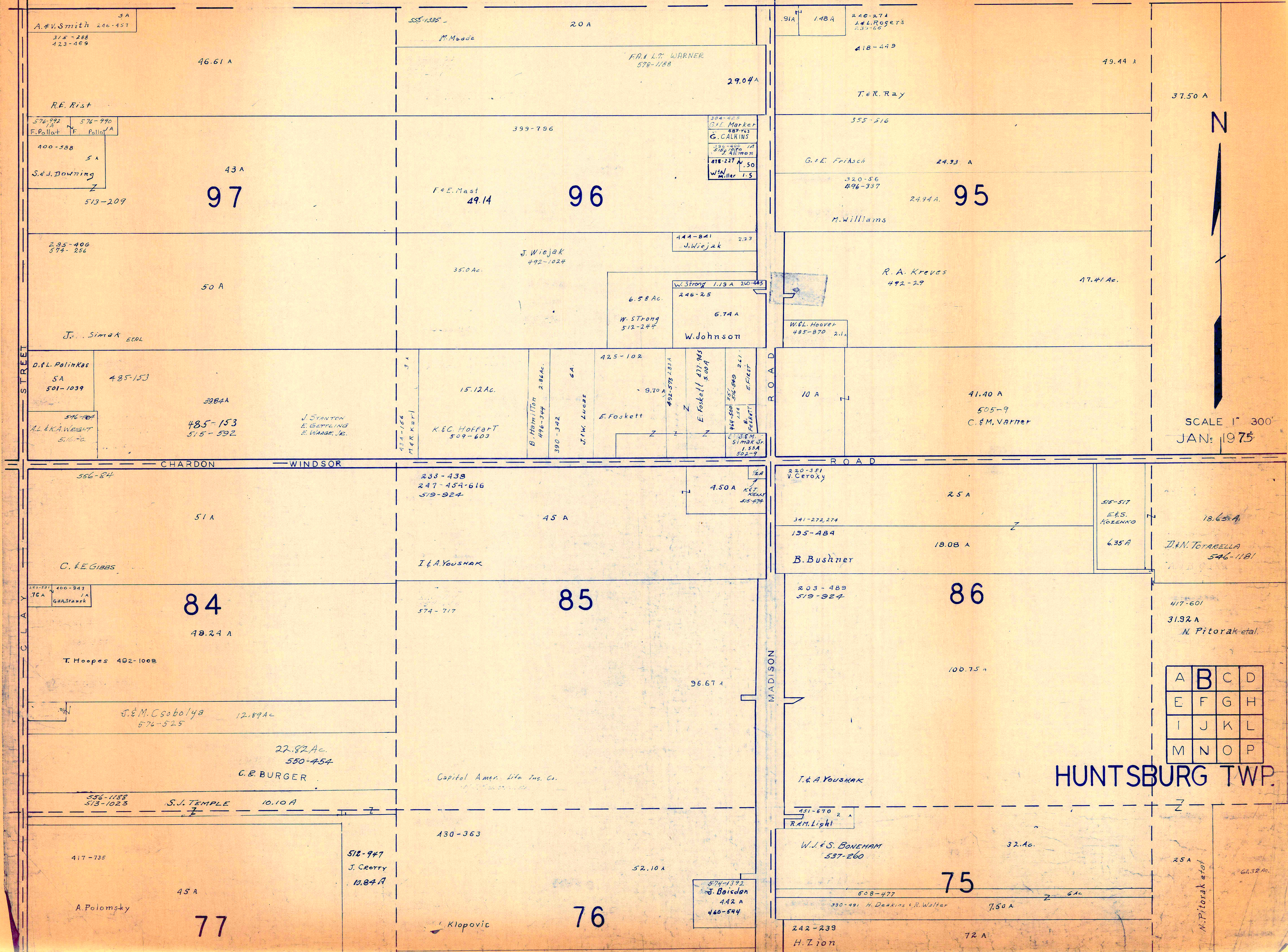
HUNTSBURG TWP.

Match Line

Match Line

MONTVILLE

TOWNSHIP

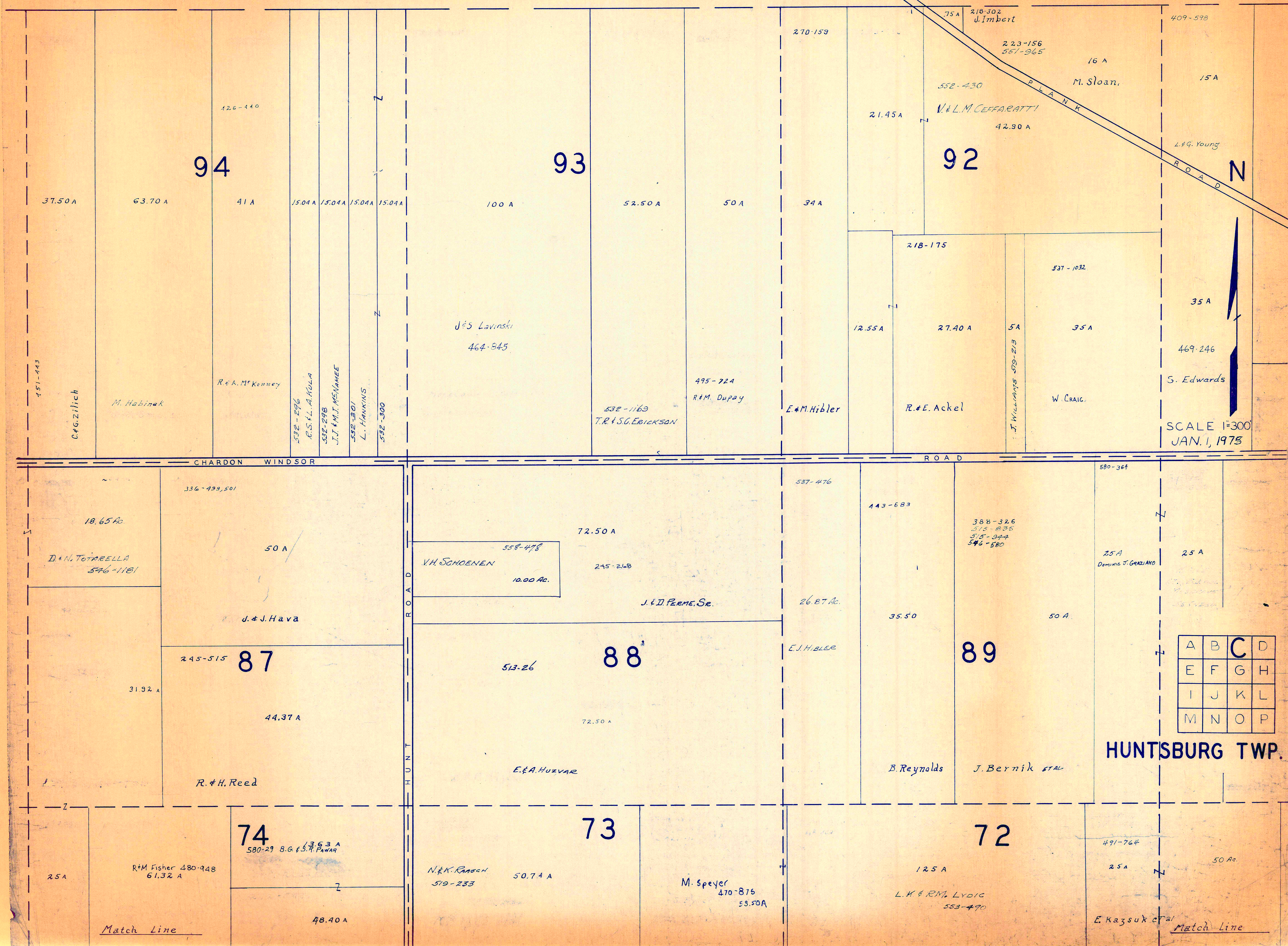


SCALE 1" = 300'
JAN 1975

A	B	C	D
E	F	G	H
I	J	K	L
M	N	O	P

HUNTSBURG TWP.

MONTVILLE TOWNSHIP



94

93

92

87

88

89

74

73

72

HUNTSBURG TWP.

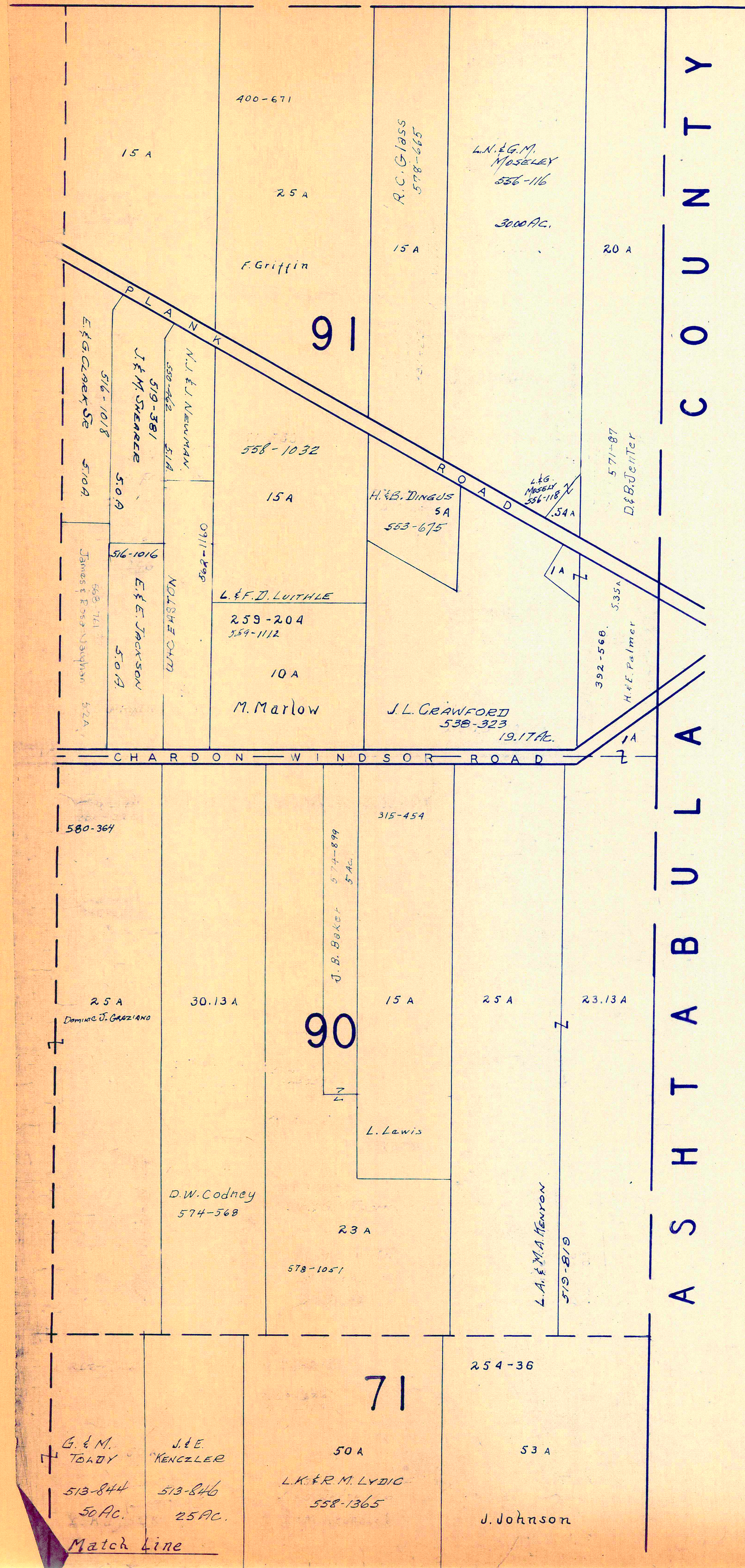
A	B	C	D
E	F	G	H
I	J	K	L
M	N	O	P

SCALE 1"=300
JAN. 1, 1973

Match Line

Match Line

MONTVILLE TWP.



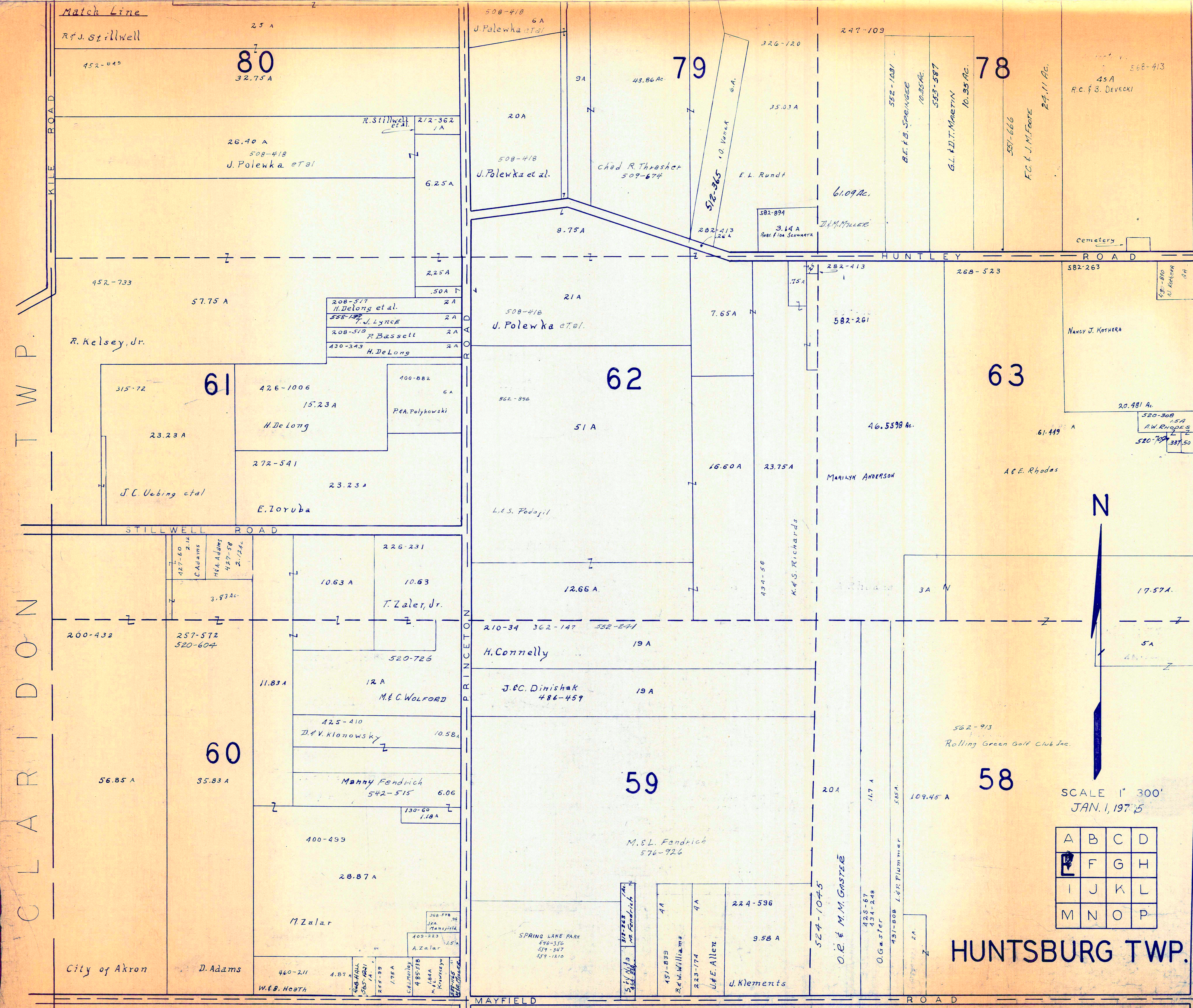
C O U N T Y
A S H T A B U L A



SCALE 1"=300'
JAN. 1, 1975

A	B	C	D
E	F	G	H
I	J	K	L
M	N	O	P

HUNTSBURG TWP.



CLARIDON TWP.

HUNTSGUR TWP.

SCALE 1" = 300'
JAN. 1, 1975

A	B	C	D
E	F	G	H
I	J	K	L
M	N	O	P



Match Line

Match Line

KILE ROAD

STILLWELL ROAD

STILLWELL ROAD

CLARIDON TWP.

City of Akron

D. Adams

W. & B. Heath

MAYFIELD ROAD

ROAD

CLAY STREET

HUNTLEY ROAD

R. J. Stillwell

452-040

80
32.75 A

26.40 A
508-418
J. Polewka et al

452-733

57.75 A

R. Kelsey, Jr.

315-72

61

23.23 A

J. C. Uebing et al

426-1006

15.23 A
H. De Long

272-541

23.23 A
E. Toruba

400-882

6 A
P. A. Polykowski

427-60

2.12 A
C. Adams

427-58

2.12 A
M. A. Adams

3.83 A

200-432

257-572
520-604

60

56.85 A

35.83 A

226-231

10.63 A

10.63
T. Zaler, Jr.

11.83 A

12 A

M. & C. Wolford

425-410

10.58 A
D. & V. Klonowsky

Mahny Fendrich
542-515
6.06

130-60

1.18 A

400-499

28.87 A

M. Zalar

368-978

95
J. A. Mansfield

409-223

1.59 A
A. Zalar

485-978

1.75 A
Ed. M. Williams

485-978

1.75 A
M. L. Williams

485-978

1.75 A
M. L. Williams

508-418
6 A
J. Polewka et al

20 A

508-418
J. Polewka et al

9.75 A

21 A

508-418
J. Polewka et al

862-896

51 A

L. S. Podajil

12.66 A

210-34
362-147
552-841

19 A
H. Connelly

J. & C. Dinishak
486-459
19 A

59

M. & L. Fendrich
576-926

SPRING LAKE PARK
576-355
579-197
579-1210

MAYFIELD ROAD

79

43.86 Ac

9 A

20 A

508-418
J. Polewka et al

9.75 A

21 A

508-418
J. Polewka et al

862-896

51 A

L. S. Podajil

12.66 A

210-34
362-147
552-841

19 A
H. Connelly

J. & C. Dinishak
486-459
19 A

59

M. & L. Fendrich
576-926

SPRING LAKE PARK
576-355
579-197
579-1210

MAYFIELD ROAD

326-120

35.03 A

F. L. Rundt

61.09 Ac.

582-894

3.14 A
Robt. Fox Schwartz

282-413

7.75 A

582-261

7.65 A

16.60 A

23.75 A

MARILYN ANDERSON

434-56

K. S. Richards

19 A

210-34
362-147
552-841

19 A
H. Connelly

J. & C. Dinishak
486-459
19 A

59

M. & L. Fendrich
576-926

SPRING LAKE PARK
576-355
579-197
579-1210

MAYFIELD ROAD

247-109

78

61.09 Ac.

F. L. Rundt

61.09 Ac.

582-894

3.14 A
Robt. Fox Schwartz

282-413

7.75 A

582-261

7.65 A

16.60 A

23.75 A

MARILYN ANDERSON

434-56

K. S. Richards

19 A

210-34
362-147
552-841

19 A
H. Connelly

J. & C. Dinishak
486-459
19 A

59

M. & L. Fendrich
576-926

SPRING LAKE PARK
576-355
579-197
579-1210

MAYFIELD ROAD

552-1081

10.35 Ac.

B. F. B. Spangole

10.35 Ac.

533-587

10.35 Ac.

G. L. J. T. Martin

10.35 Ac.

557-666

24.11 Ac.

F. C. & J. M. Foote

24.11 Ac.

582-263

268-523

582-263

Nancy J. Koshera

20.481 Ac.

520-308

1.54 A
A. W. Rhodes

520-788

337.50

61.419 A

520-788

337.50

A. & E. Rhoads

17.57 A

5 A

48.00

562-913

Rolling Green Golf Club Inc.

109.45 A

3 A

582-913

Rolling Green Golf Club Inc.

109.45 A

3 A

582-913

Rolling Green Golf Club Inc.

109.45 A

3 A

582-913

Rolling Green Golf Club Inc.

109.45 A

3 A

582-913

Rolling Green Golf Club Inc.

109.45 A

3 A

582-913

Rolling Green Golf Club Inc.

109.45 A

3 A

582-913

Rolling Green Golf Club Inc.

109.45 A

3 A

582-913

Rolling Green Golf Club Inc.

109.45 A

3 A

582-913

Rolling Green Golf Club Inc.

109.45 A

3 A

582-913

Rolling Green Golf Club Inc.

109.45 A

3 A

582-913

Rolling Green Golf Club Inc.

109.45 A

3 A

582-913

Rolling Green Golf Club Inc.

109.45 A

3 A

582-913

Rolling Green Golf Club Inc.

109.45 A

3 A

582-913

Rolling Green Golf Club Inc.

109.45 A

3 A

582-913

Rolling Green Golf Club Inc.

109.45 A

3 A

582-913

Rolling Green Golf Club Inc.

109.45 A

3 A

582-913

Rolling Green Golf Club Inc.

109.45 A

3 A

582-913

Rolling Green Golf Club Inc.

109.45 A

3 A

582-913

Rolling Green Golf Club Inc.

109.45 A

3 A

582-913

Rolling Green Golf Club Inc.

109.45 A

3 A

582-913

Rolling Green Golf Club Inc.

109.45 A

3 A

582-913

Rolling Green Golf Club Inc.

109.45 A

3 A

582-913

Rolling Green Golf Club Inc.

109.45 A

3 A

582-913

Rolling Green Golf Club Inc.

109.45 A

3 A

582-913

Rolling Green Golf Club Inc.

109.45 A

3 A

582-913

Rolling Green Golf Club Inc.

109.45 A

3 A

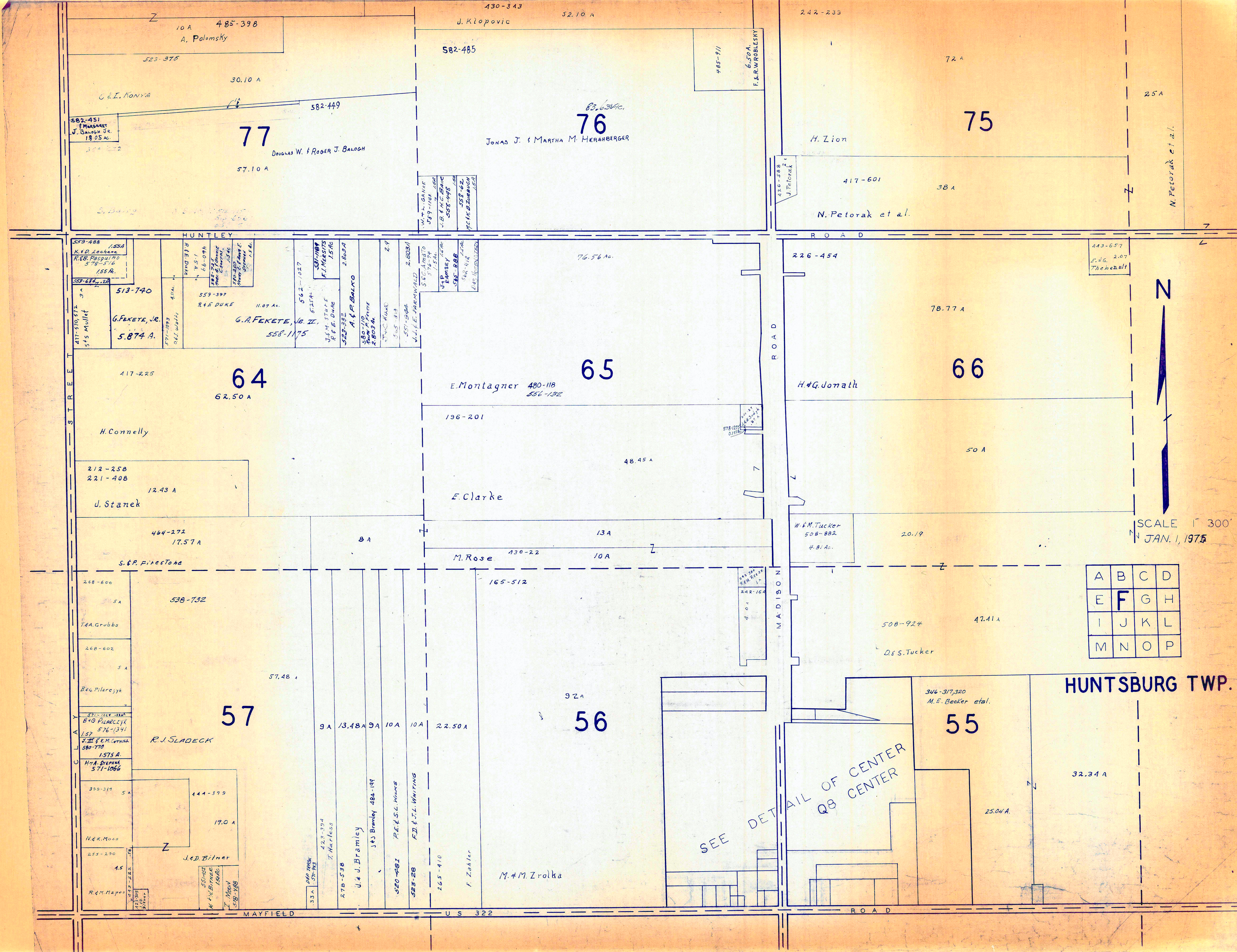
582-913

Rolling Green Golf Club Inc.

109.45 A

3 A

582-913



10A 485-398
A. Palomsky
525-375
30.10 A
C. I. Kovya
582-449
77
57.10 A
Douglas W. & Roger J. Balogh

430-343
J. Klopovic
52.10 A
582-485
83.634 Ac.
76
Jonas J. & Martha M. Heranberger
485-911
6.50 A
F. & R. WROBLESKY

242-233
72 A
25 A
75
H. Lion
417-601
38 A
N. Petorak et al.

559-488 1.55 A
K. & D. Lechane
R. B. Pasquino
578-576
1.55 A
513-740
G. FEKETE, JR.
5.874 A.
571-1093
R. E. DUKE
11.07 A.
G. A. FEKETE, JR. II,
558-1175
417-225
H. Connelly
62.50 A
212-258
221-408
12.43 A
J. Stanek

76.56 Ac.
65
E. Montagner 480-118
556-132
196-201
48.45 A
E. Clarke
578-1022
0.121 A

226-454
78.77 A
66
H. & G. Donath
50 A
443-657
5.46, 2.07
Theobald
W. & M. Tucker
508-882
4.81 Ac.
20.19

444-272
17.57 A
S. & P. Pilestone
268-600
5 A
T. A. Grubbs
268-602
5 A
B. & P. Pilestone
571-1088
B. & G. Pilestone
576-1341
1.57
J. III & K. M. Pilestone
580-770
1.575 A
H. & A. Pilestone
571-1066
399-317
5 A
144-379
17.0 A
N. & K. Moss
255-290
4.5
J. & D. Bitner
551-821
W. & N. Brance
578-1688
571-1093
R. E. DUKE
11.07 A.
562-1027
5.21 A
531-1087
F. J. MESSIS
1.576
280-28
A. & P. BALLO
560-1100
2.803 A.
571-922
L. & E. HERNARD
2.803 A
571-922
L. & E. HERNARD
2.803 A
571-922
L. & E. HERNARD
2.803 A
571-922
L. & E. HERNARD
2.803 A

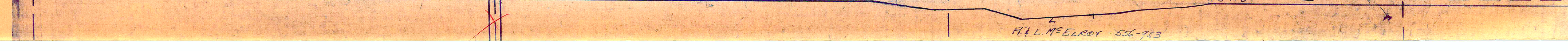
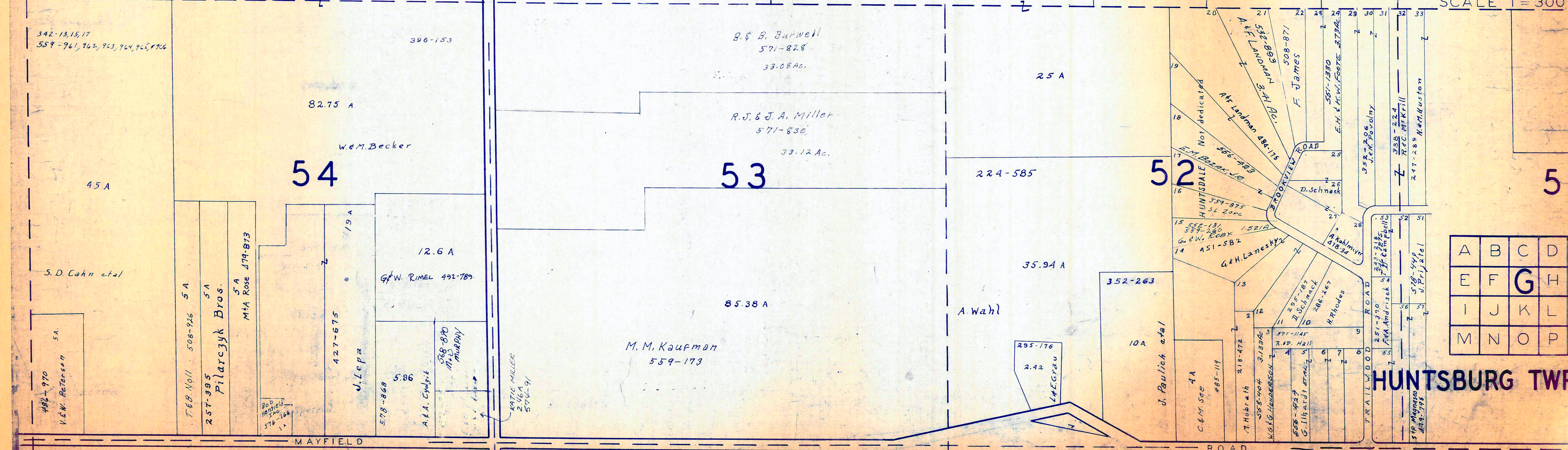
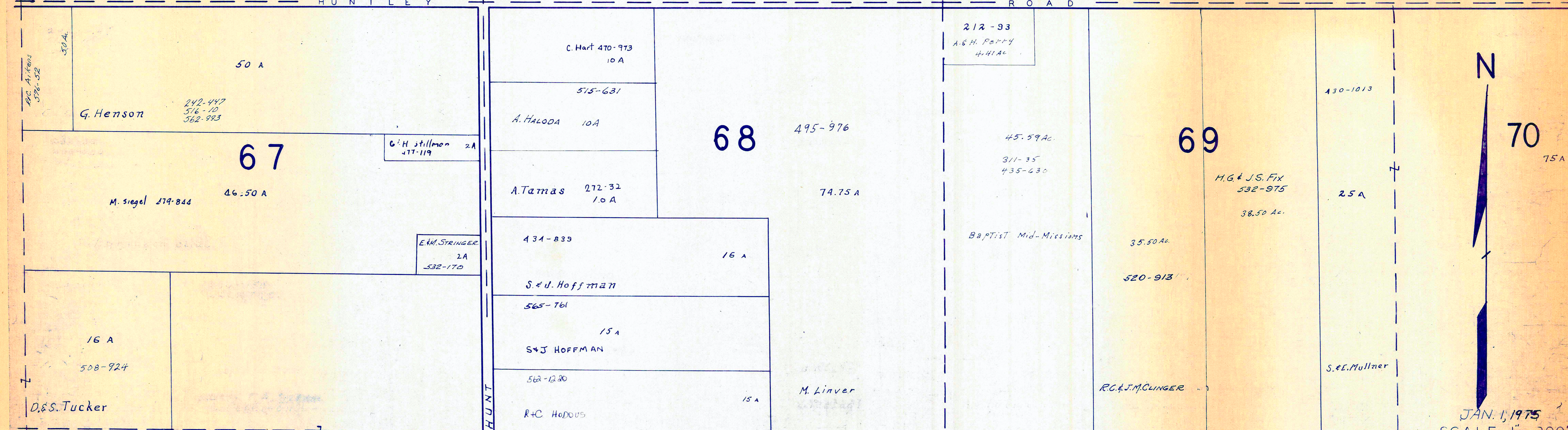
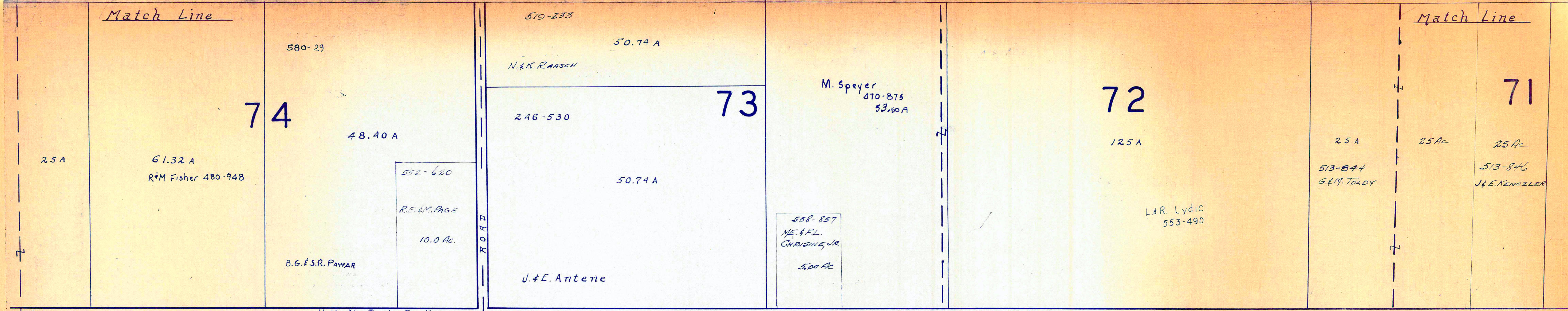
13 A
10 A
M. Rose
130-22
10 A
165-512
92 A
56
M. & M. Zrolka
22.50 A
3.48 A
3 A
10 A
10 A
520-482
F. & S. L. Mink
523-28
F. D. & J. L. WINTING
265-410
F. Zahler

508-924
47.41 A
D. & S. Tucker
346-317,320
M. E. Becker et al.
55
32.34 A
25.04 A
SEE DETAIL OF CENTER
Q8 CENTER

A	B	C	D
E	F	G	H
I	J	K	L
M	N	O	P

SCALE 1" = 300'
JAN. 1, 1975

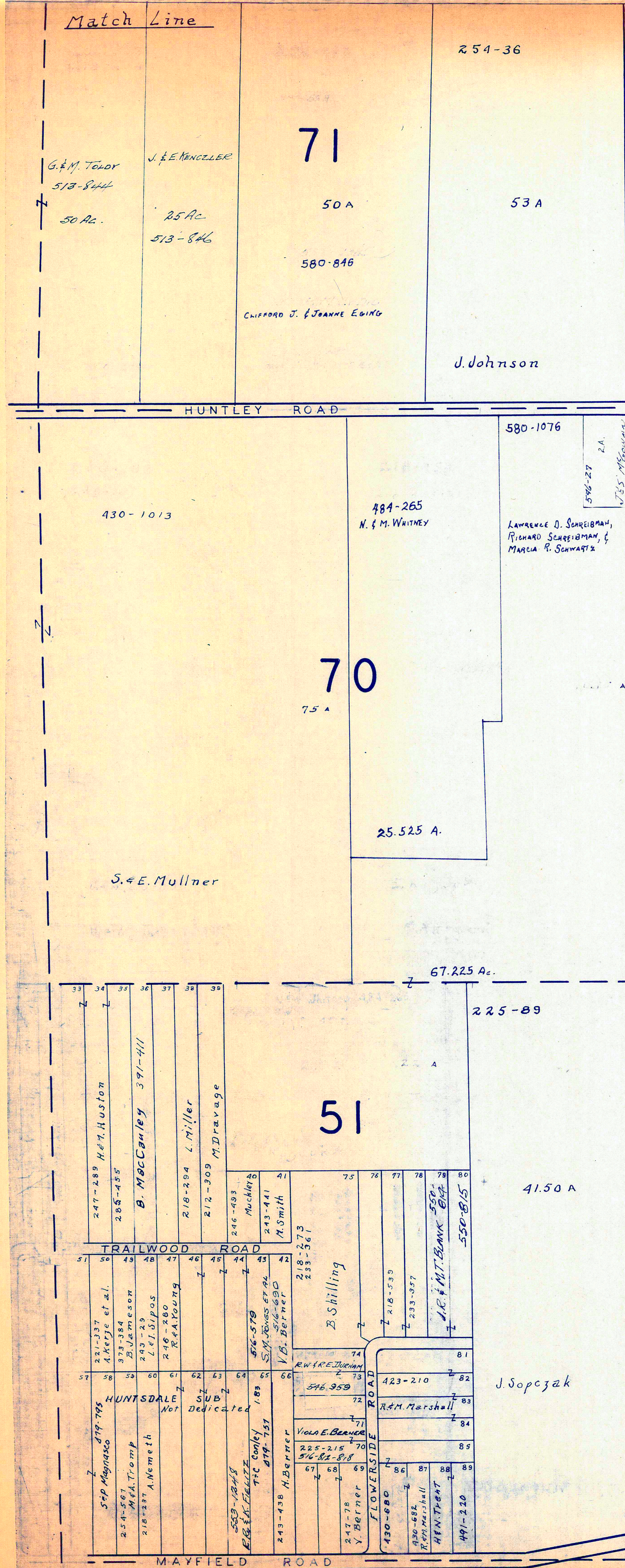
HUNTSBURG TWP.



JAN. 1, 1975
SCALE 1" = 300'

A	B	C	D
E	F	G	H
I	J	K	L
M	N	O	P

HUNTSBURG TWP.



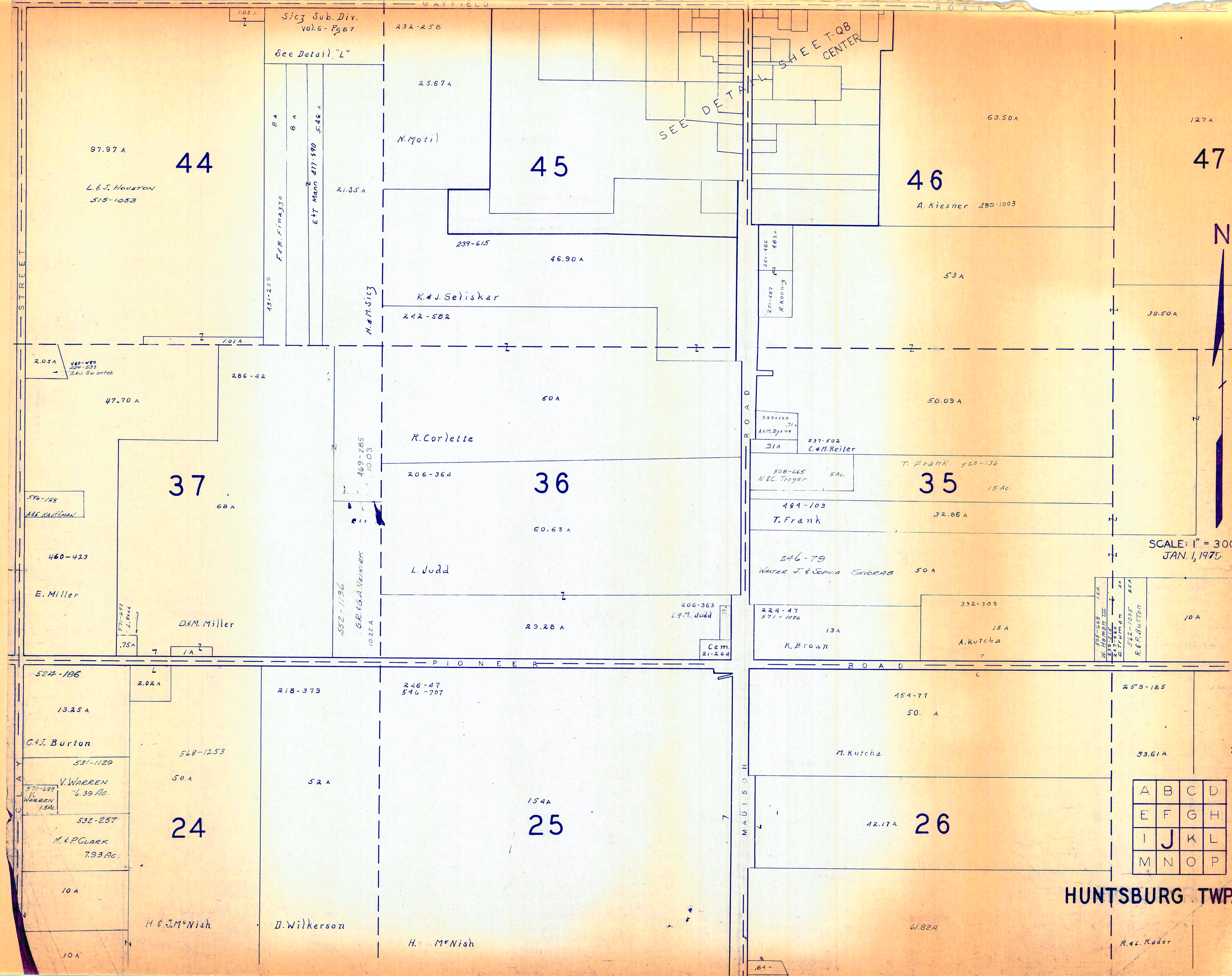
A S H T A B U L A C O U N T Y



JAN. 1, 1975
Scale 1" = 300'

A	B	C	D
E	F	G	H
I	J	K	L
M	N	O	P

HUNTSBURG TWP.



Sicg Sub. Div.
Vol. 6 - P. 87

See Detail "L"

SEE DETAIL SHEET Q8
CENTER

SEE DETAIL

97.97 A
L. & J. Houston
515-1053

44

25.67 A
N. Motil

45

63.50 A

46

A. Kiesner 480-1003

127 A

47

2.05 A
460-495
254-533
S.W. Sw on tek

47.70 A

37

68 A

574-188
A.E. KAUFMAN

460-423
E. Miller

D. & M. Miller

286-42

469-285
10-03
G.R. & A. NEVIERA
10-22 A

R. Corlette

206-364

36

60.63 A

L. Judd

29.28 A

206-363
L. & M. Judd

Cem
21-264

251-480
463 A
R. KOCHING

299-120
71 A
A. & M. Byrne

237-502
C. & M. Reiter

508-665
N. & C. Troger

35

15 Ac.

T. Frank 520-136

441-103

T. Frank

32.86 A

246-79
WALTER J. & SOPHIA SWIGERS

50 A

224-47
571-1026

13 A

R. Brown

392-309

15 A

A. Kutcha

505-668
159
W. HAMB III
393-515
STRAHAN
24
519-1005
21 A
R. P. BUTTOL

10 A

522-186

2.02 A

13.25 A

C. J. Burton

531-1129

568-1253

50 A

571-689
V. WARREN
WARREN
154 A

532-257

M. & P. CLARK
793.80 A

24

10 A

10 A

H. & J. M. Nish

218-379

52 A

D. Wilkerson

246-47
546-707

154 A

25

H. M. Nish

154-77

50 A

M. Kutcha

42.17 A

26

61.82 A

259-185

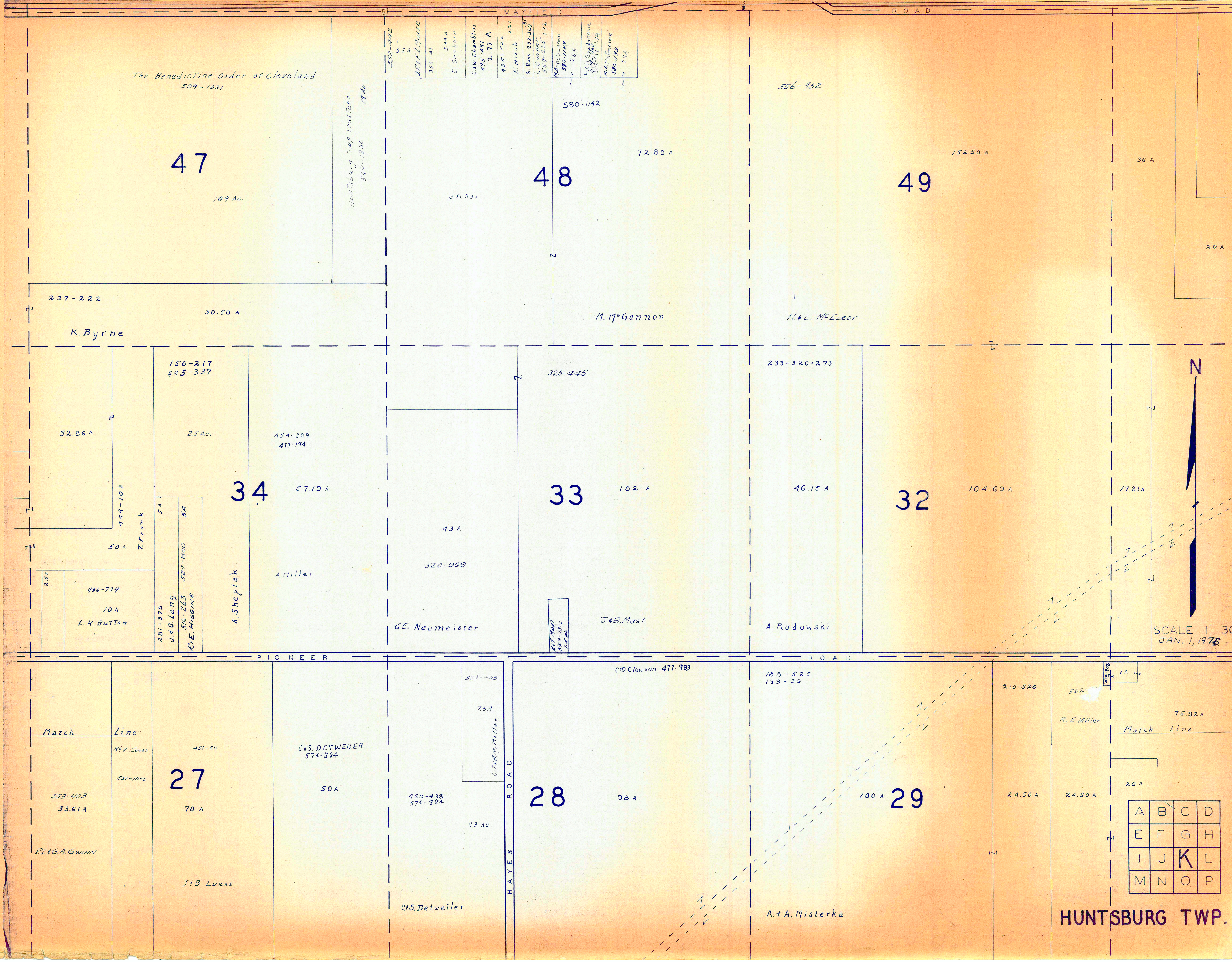
33.61 A

R. L. Kader

A	B	C	D
E	F	G	H
I	J	K	L
M	N	O	P

SCALE: 1" = 300
JAN. 1, 1975

HUNTSBURG TWP.



The Benedictine Order of Cleveland
509-1031

47

109 Ac.

Huntsburg Twp. Trustees
555-1830
18Ac

MAYFIELD ROAD
555-1830
55
J.F.H. Miller
325-41
344A
C. Satterborn
C.W. Campbell
495-491
2.77 A
435-522
E. Hirsch
6 Ross 232-207
L. C. O. O. O.
587-245 172
M.B. Gannon
580-1142
2.5A
H.C.H. Gannon
580-1142
M.B. Gannon
580-1142

48

72.80 A

580-1142

M. McGannon

556-952

49

152.50 A

H.L. McElroy

237-222

30.50 A

K. Byrne

156-217
495-337

25 Ac.

454-309
417-194

34

57.19 A

A. Miller

325-445

33

102 A

43 A

520-909

G.E. Neumeister

233-320+273

46.15 A

A. Rudowski

32

104.69 A

17.21 A

32.86 A

449-103

50 A

5A

5A

281-379
J.O. Lang
516-263
J.E. Higgins

486-734

10 A

L.K. Button

2.5A

Match Line

Line

REV Jones

451-511

27

70 A

ELEG. A. GWINN

J.B. Lukas

523-708

7.5A

G. E. Miller

49.30

C.S. Detweiler

C.S. DETWEILER
574-384

50 A

C.D. Clawson 471-983

28

98 A

HAYES ROAD

188-525
133-39

29

100 A

A.A. Misterka

210-526

24.50 A

R.E. Miller

Match Line

75.92 A

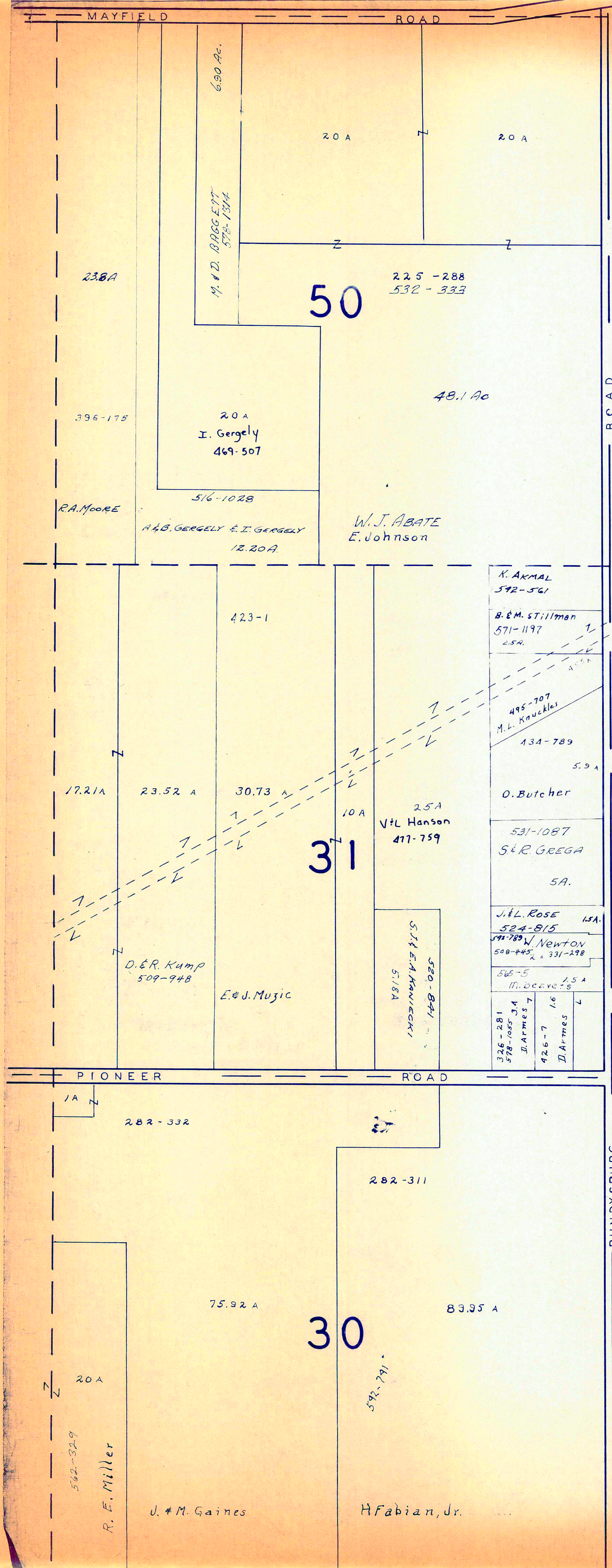
20 A

A	B	C	D
E	F	G	H
I	J	K	L
M	N	O	P

HUNTSBURG TWP.

SCALE 1" = 300'
JAN. 1, 1976

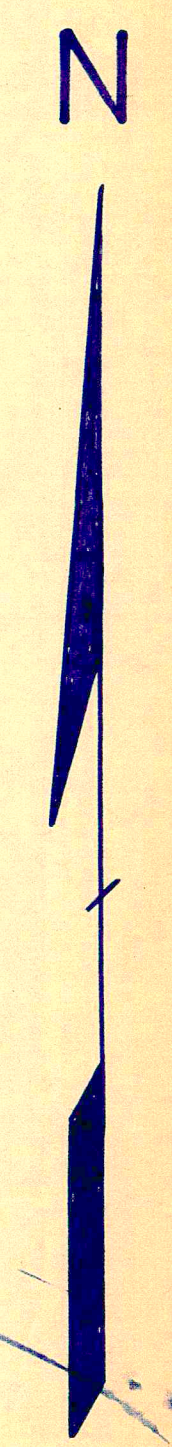




A S H T A B U L A C O U N T Y

MAYFIELD ROAD US 322							
1	2	3	4	5	6	7	8
1.08 A	1 A	1 A	1 A	.60A	1 A	1 A	1.13 A
409-391 F. & S. Snow	131-239 K. & R. Finazzo	285-498 H. Hayes et al	471-590 E. T. Mason	1.90			

SICZ SUBDIVISION
 VOL. 6 PG. 87
 LOT 44
 SCALE 1" = 100'

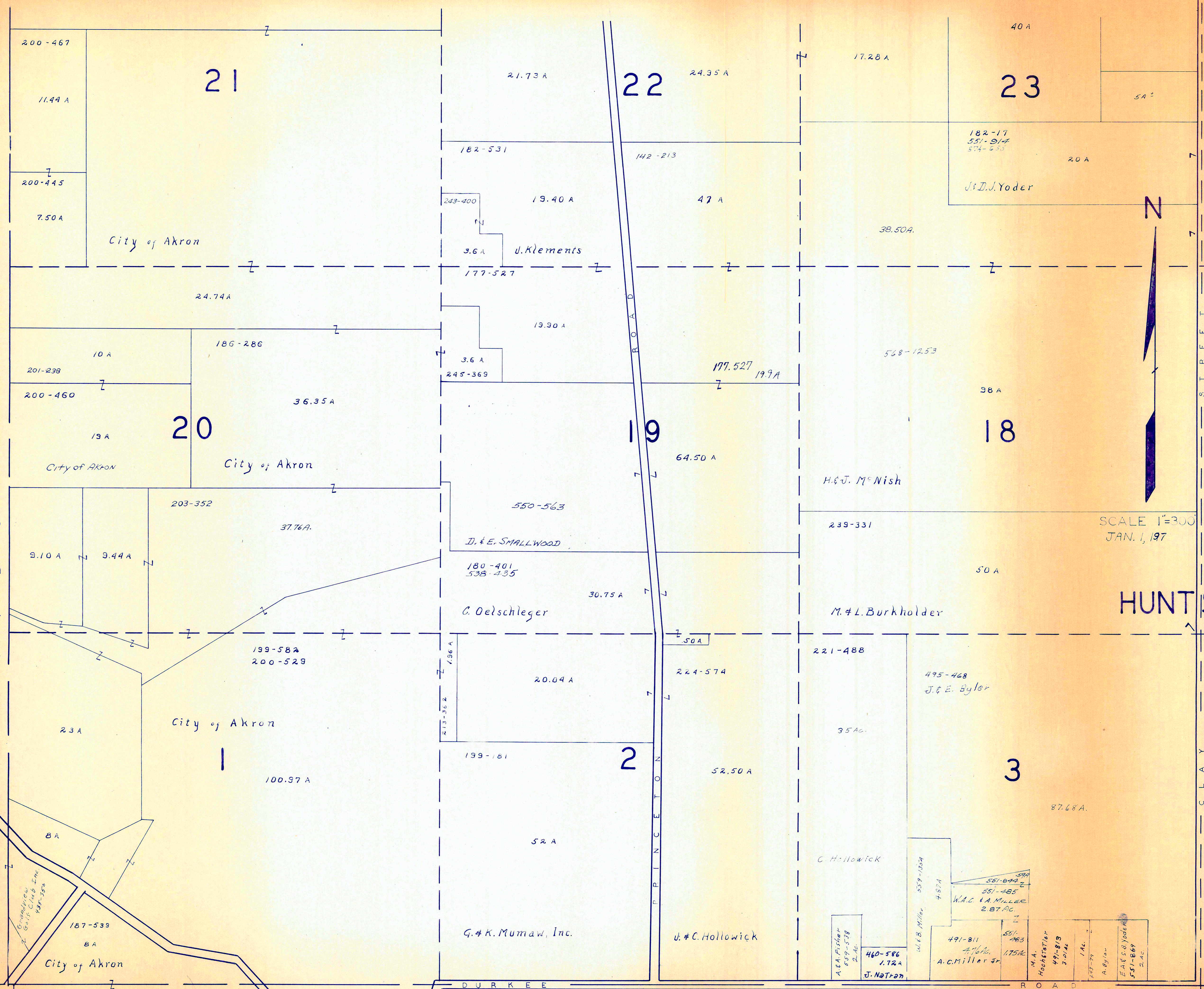


SCALE 1" = 300'
 JAN. 1, 1974

A	B	C	D
E	F	G	H
I	J	K	L
M	N	O	P

HUNTSBURG, TWP.

C L A R I D O N T O W N S H I P



A	B	C	D
E	F	G	H
I	J	K	L
M	N	O	P

SCALE 1"=300
JAN. 1, 1975

HUNTSBURG TWP
JAN. 1, 1975

M I D D L E F I E L D T O W N S H I P

200-467
11.44 A
200-445
7.50 A
201-238
200-460
19 A
203-352
9.10 A
9.44 A
23 A
187-539
8 A
City of Akron

21
24.74 A
186-286
36.35 A
37.76 A
199-582
200-529
100.97 A
City of Akron

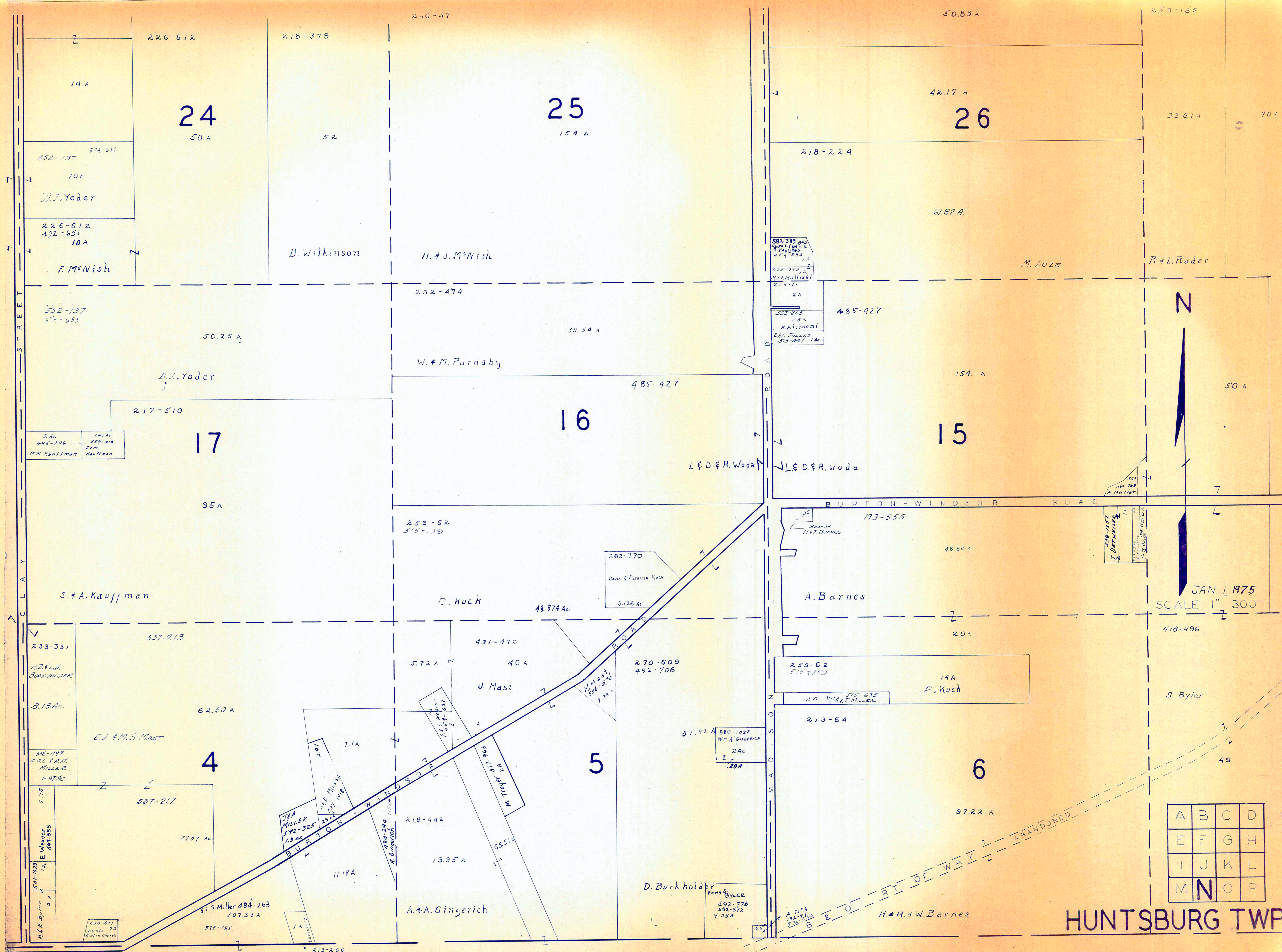
22
21.73 A
182-531
19.40 A
3.6 A
177-527
19.90 A
3.6 A
245-369
550-563
D. & E. SMALLWOOD
180-401
538-435
30.75 A
C. Oelschleger
199-181
52 A
G. & K. Mumaw, Inc.

19
24.35 A
142-213
47 A
177.527
19.9 A
64.50 A
H. & J. M. Nish
239-331
50 A
M. & L. Burkholder
224-574
52.50 A
J. & C. Hollowick

18
17.28 A
38.50 A
568-1253
38 A
50 A
221-488
35 AC.
C. Hollowick
491-811
476 AC.
A. C. Miller Jr.
460-586
1.72 A
J. NoTran

23
40 A
182-17
551-914
574-555
J. D. Yoder
20 A
50 A
495-468
J. & E. Byler
581-844
551-485
W. A. C. Miller
2.87 AC.
551-867
2 AC.

14 A
10 A
10 A
50.25 A
37 A
64.21 A
B. B. A. C.
532-1199
H. A. L. & A. M. Miller
2.37 AC.
E. Keavene
2.75 AC.
469-555
501-1023
M. E. Byler
2 AC.

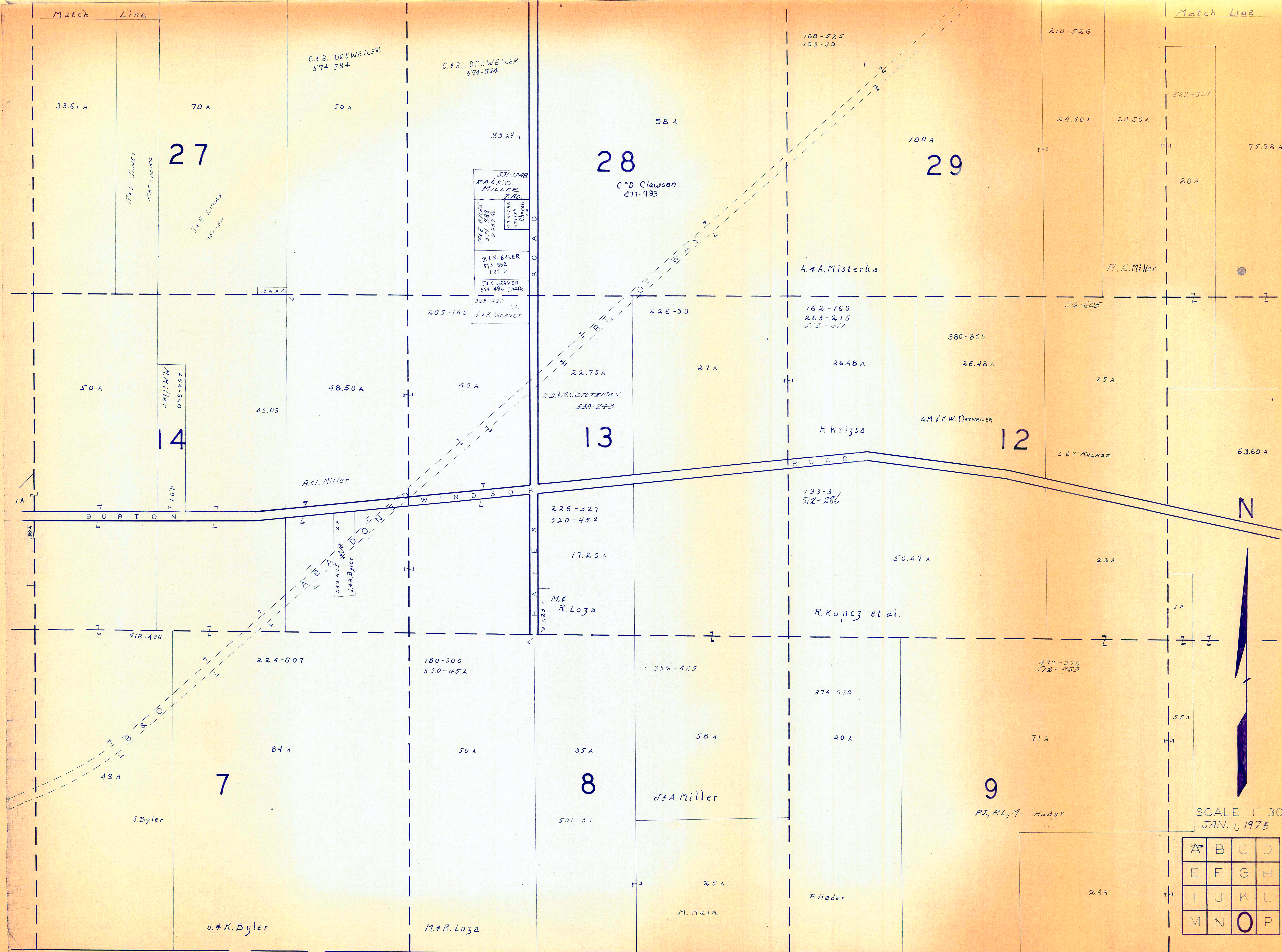


JAN. 1, 1975
SCALE 1" = 300'

A	B	C	D
E	F	G	H
I	J	K	L
M	N	O	P

HUNTSBURG TWP.

M I D D L E F I E L D T O W N S H I P



Match Line

Match Line

27

28

29

14

13

12

7

8

9

M I D D L E F I E L D

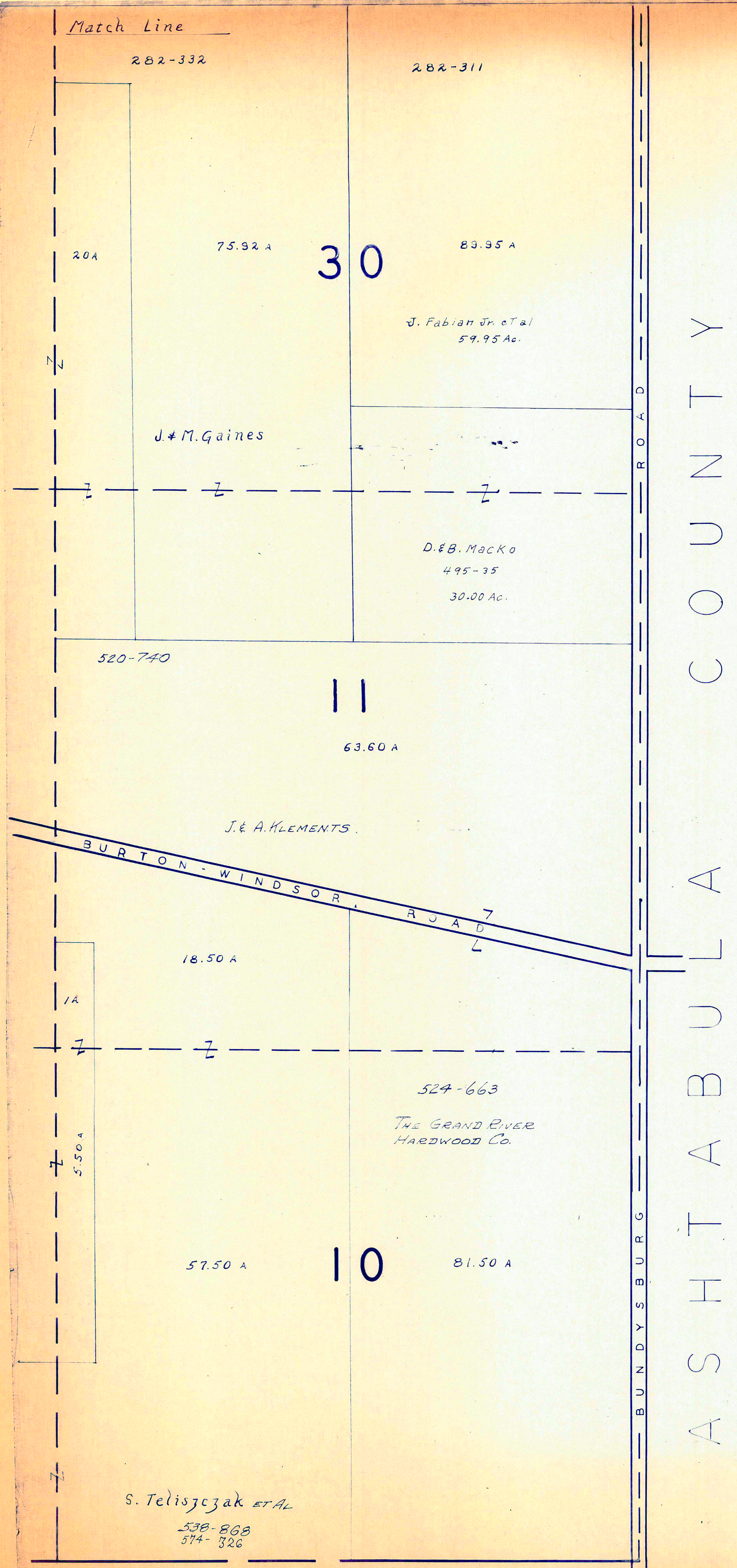
T O W N S H I P H U N T S B U R G T W P

A	B	C	D
E	F	G	H
I	J	K	L
M	N	O	P

SCALE 1" = 300'
JAN. 1, 1975

N

33.61 A, 70 A, 50 A, 58 A, 100 A, 24.50 A, 24.50 A, 75.92 A, 20 A, 562-327, 210-526, 188-525, 193-39, C.A.S. DETWEILER 574-384, 53.64 A, C.A.S. DETWEILER 574-384, 531-1248, R.A.K.O. MILLER 2A, M.L.E. MILLER 974-308, 288A, 189-250, 193-3, 193-39, J.K. BYLER 574-592, 1.91 AC, J.K. WEAVER 574-496, 1.04 AC, 30E 700, J.K. WEAVER, 205-145, 226-33, 162-169, 203-215, 553-611, 580-805, 26.48 A, 516-605, R.E. MILLER, 75.92 A, 20 A, 50 A, 45.03, 48.50 A, 48 A, 22.75 A, 27 A, 26.48 A, 580-805, 26.48 A, 25 A, 63.60 A, A.H. MILLER, R.D.A.M.V. STUTZMAN 538-243, R. KRIZSA, A.M. F.E.W. DETWEILER, L.E.T. KALASZ, 193-3, 512-286, 226-327, 520-452, 17.25 A, 50.47 A, 23 A, BURTON, WINDSOR, WINDSOR, R. LOJZA, R. KUNCZ et al., 418-496, 224-607, 180-306, 520-452, 356-429, 374-638, 377-376, 572-953, 48 A, 84 A, 50 A, 35 A, 58 A, 40 A, 71 A, 55 A, S. BYLER, J.A. MILLER, P.J., P.L., M. HADAR, 501-53, 25 A, M. Hala, P. HADAR, 24 A, J.K. BYLER, M.R. LOJZA



Match Line
282-332

282-311

20A

75.92 A

30

83.95 A

J. Fabian Jr. et al
59.95 Ac.

J. M. Gaines

D. B. MacKo
495-35
30.00 Ac.

520-740

11

63.60 A

J. E. A. Klements

BURTON-WINDSOR ROAD

18.50 A

1A

5.50 A

524-663

The Grand River
Hardwood Co.

57.50 A

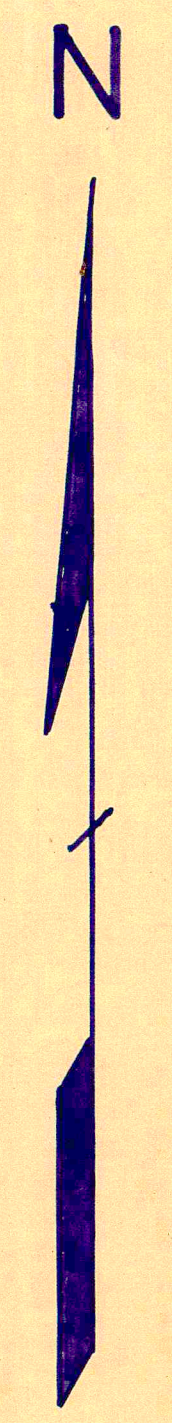
10

81.50 A

S. Teliszcjak et al
538-868
574-326

BUNDYSBURG ROAD
A S H T A B U L A
C O U N T Y

MIDDLEFIELD TWP.



SCALE 1" = 300
JAN. 1, 1975

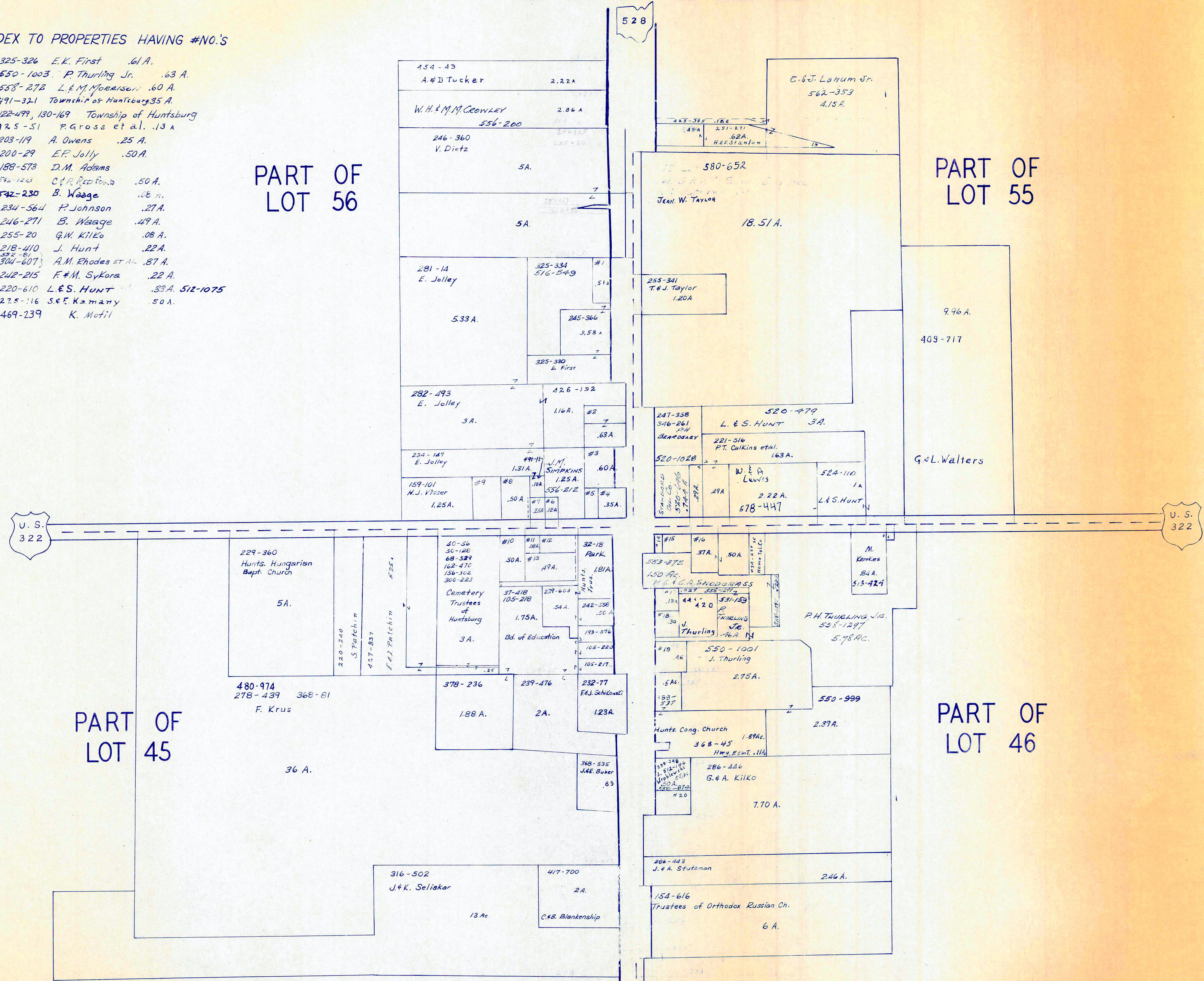
A	B	C	D
E	F	G	H
I	J	K	L
M	N	O	P

HUNTSBURG TWP.

HUNTSBURG TP. CENTER

INDEX TO PROPERTIES HAVING #NO.'S

- #1 325-326 E.K. First .61 A.
- #2 550-1003 P. Thurling Jr. .63 A.
- #3 558-272 L.E.M. Johnson .60 A.
- #4 491-321 Township of Huntsburg 35 A.
- #5 122-499, 130-169 Township of Huntsburg
- #6 425-51 P. Gross et al. .13 A.
- #7 203-119 A. Owens .25 A.
- #8 200-29 E.P. Jolly .50 A.
- #9 188-573 D.M. Adams
- #10 542-230 C.F.R. Redford .50 A.
- #11 542-230 B. Waage .06 A.
- #12 234-564 P. Johnson .27 A.
- #13 246-271 B. Waage .49 A.
- #14 255-20 G.W. Killo .08 A.
- #15 218-410 J. Hunt .22 A.
- #16 304-607 A.M. Rhodes et al. .87 A.
- #17 242-215 F.M. Sykora .22 A.
- #18 220-610 L.E.S. HUNT .33 A. 512-1075
- #19 275-116 S.E. Kamany .50 A.
- #20 469-239 K. Motil



SCALE: 1 in. = 200'
JAN. 1, 1975